

# Global Living Wage Series China

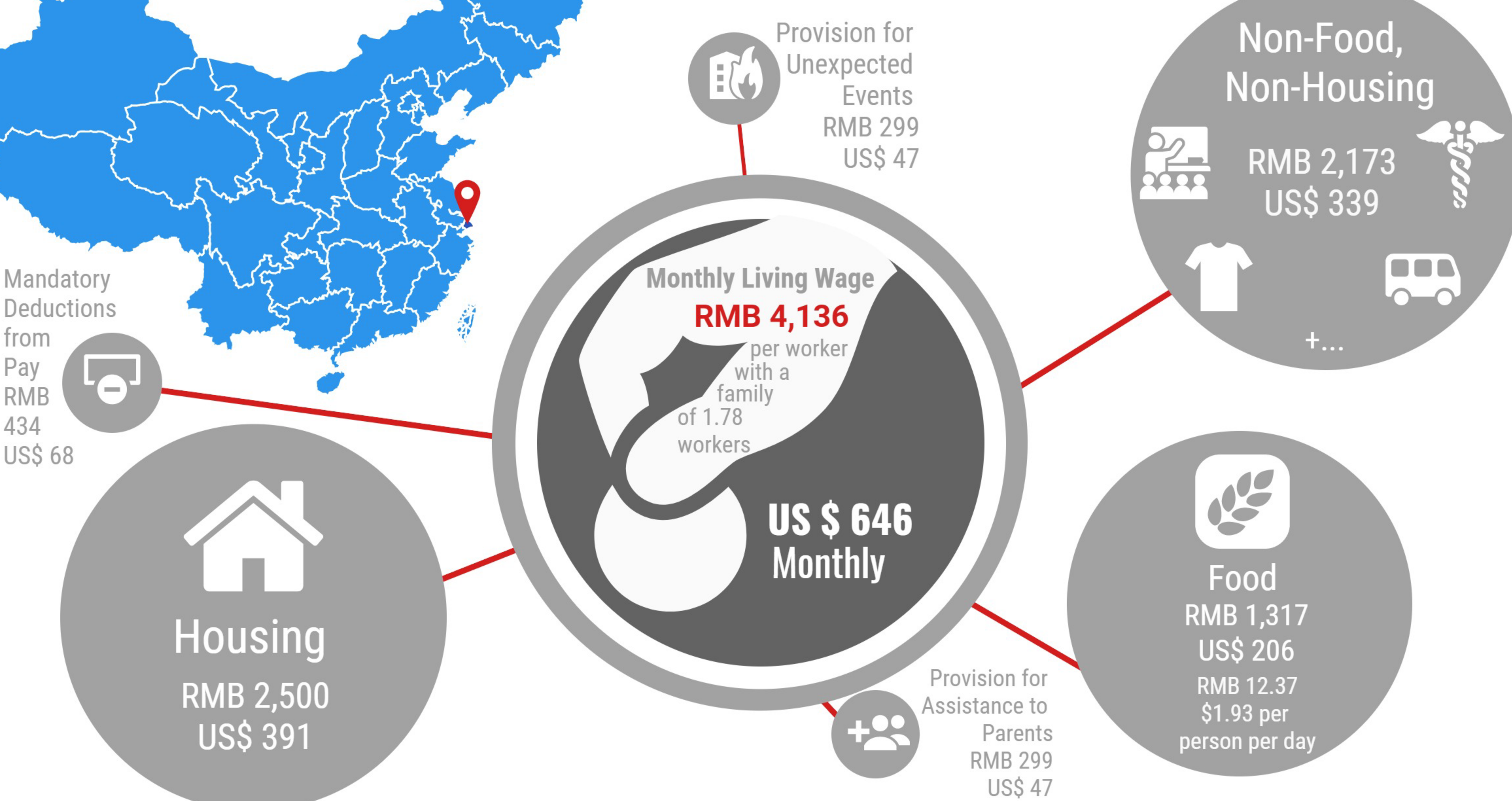
## Urban Shanghai



Photo Courtesy of Xu Hongzhi CC BY-SA 4.0

### Shanghai, China

Synopsis of Living Wage Study Conducted By: Cheng Yuan, Shen Ke, Qian Jing, and Wang Feng of Fudan University  
Living Wage Estimated using the Anker Methodology, August 2015

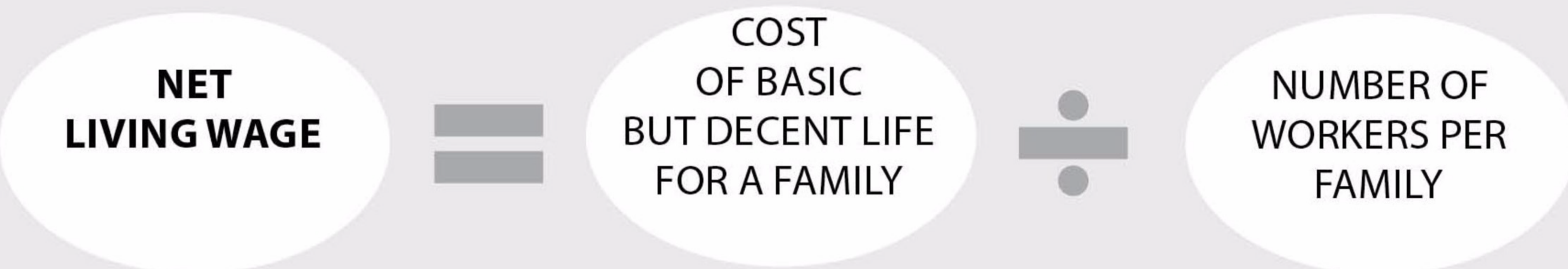


### Local Housing Standard for Family

- durable floor such as cement or tile in reasonable condition
- durable walls such as cement or stone in reasonable condition
- durable roof of zinc or cement without leaks (or very easy to repair)
- sufficient number of windows for adequate lighting and ventilation (preferably 2 windows per room)
- electricity
- piped water inside house
- flush toilet inside house
- at least 3 rooms (living room, bedroom, kitchen)
- at least 45 square meters of floor space
- building in reasonable condition with safe outside environment

### Model Diet

- edible grams per person per day
- 397g rice
  - 56g tofu
  - 69g UHT milk (1 cup milk for children under 12)
  - 50g egg (1 egg)
  - 71g pork
  - 20g chicken
  - 30g fish (grass carp)
  - 64g bok choy (least expensive green leafy vegetable)
  - 64g cabbage
  - 64g tomato
  - 64g cucumber
  - 50g apple
  - 50g banana
  - 34g soybean oil
  - 17g white sugar
  - 2g tea



### Context Provided for High Tech Industry

#### Key Values and Assumptions

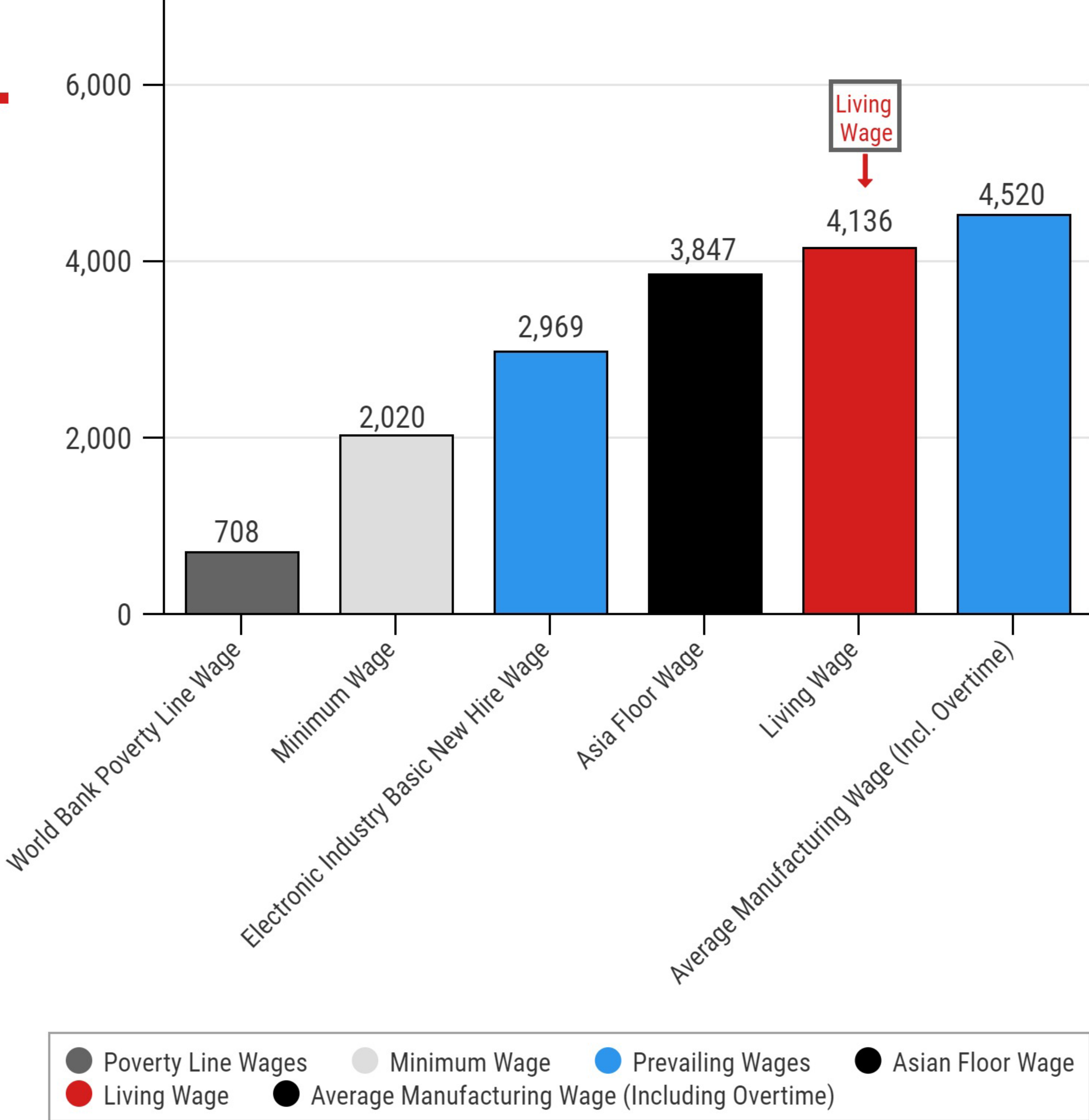
- 40 Hour Work Week
- 21.75 Work Days Per Month
- Exchange Rate Used  
US \$1 = RMB Yuan 6.4
- Family Size 3.5  
2 Adults, 1.5 Children  
1.78 Workers Per Family

Total Monthly Living Wage = ((Food + Housing + Non-Food, Non-Housing + Provision for Unexpected Events) ÷ Number of Workers in a Family) + Mandatory Deductions from Pay

Register for Regular Benchmark Updates from the GLWC at <http://eepurl.com/b6Jlyf>

[www.globallivingwage.org](http://www.globallivingwage.org)

### Monthly Living Wage for Urban Shanghai, China



Legend: Poverty Line Wages (grey), Minimum Wage (light blue), Prevailing Wages (blue), Asian Floor Wage (black), Living Wage (red), Average Manufacturing Wage (Including Overtime) (dark blue)

**GLOBAL LIVING WAGE COALITION**

Global Living Wage Coalition Members:  
Fairtrade International, Forest Stewardship Council, GoodWeave International, Rainforest Alliance, Social Accountability International, Sustainable Agriculture Network, and UTZ.  
In Partnership with the ISEAL Alliance and Richard Anker and Martha Anker

Made Possible by the Generous Support of:



Ministry of Foreign Affairs of the Netherlands